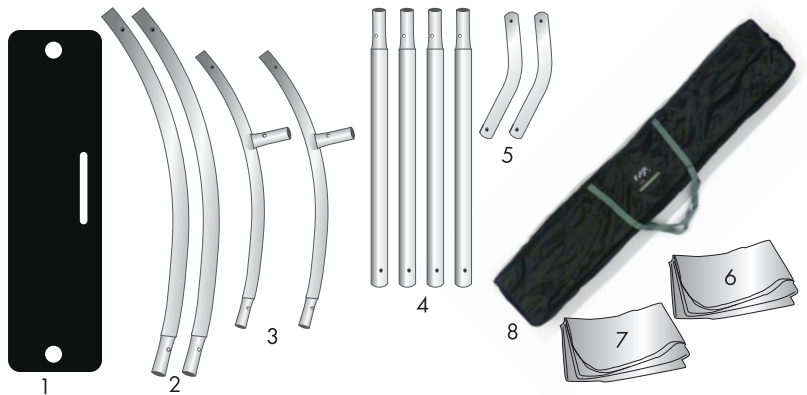


Eurofit Round Banner Display (Small)

Product Parts

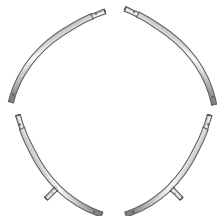
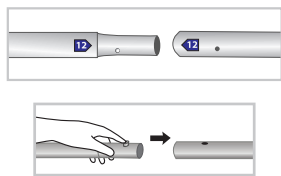
- 1 - Base
- 2 - Curved Pole (x2)
- 3 - Bottom Curved Pole (x2)
- 4 - Straight Pole (x4)
- 5 - Angled Pole (x2)
- 6 - Top Graphic
- 7 - Optional Bottom Graphic
- 8 - Case



Display Set-Up

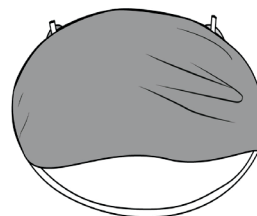
Step 1

Assemble the top section using the Curved Poles (2) and Bottom Curved Poles (3) by connecting the corresponding numbers together while pressing the snap button as shown.



Step 2

Place the assembled top section from **Step 1** on the floor with Bottom Curved Poles (3) facing upward. Place the zippered end of Top Graphic (6) over the assembly, then align the two small openings in the graphic over the posts. Zip Graphic (6) closed.



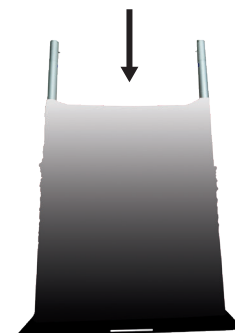
Step 3

Following the corresponding numbers, assemble the bottom section together using the Straight Pole (4) and Angled Pole (5) to the Base (1).



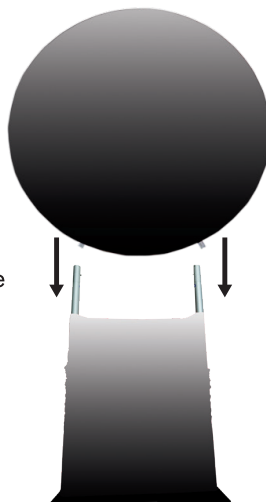
Step 4

Slide Optional Bottom Graphic (7) over assembled bottom section. Push Graphic down allowing a few inches of Straight Poles (4) to show.



Step 5

Following the corresponding numbers, assemble the top section and bottom section together. Adjust Optional Bottom Graphic (7) as needed.



Storage & Care

Place all product parts into Carry Case and store in a cool dry location. Recommended for indoor use only. Machine wash on gentle cycle using mild detergent. Tumble Dry No Heat. Do NOT dry clean, Do NOT Iron.